



**Offered at \$225,000**

**W. Rudasill Road, Tucson, AZ 85743**

**APN 213-21-001D**

- Approximately 7.76 Acres
- Phone, Water, & Electric at Lot Line
- Adjacent to Saguaro National Park
- Views of Surrounding Peaks, Vegetation, and Washes
- Home Site Pad Cleared
- Septic System Installed
- Seller Financing Available!



**Tucson MLS: 21121092**



From Ina & Interstate 10:  
West on Ina Road  
South on Wade Road, which turns into Picture Rocks Road  
Drive through Saguaro National Park to Tula Lane  
South on Tula Lane to Rudasill Road  
Turn East on Rudasill to last parcel on South

- Price is subject to change without Notice
- Subject to Prior Sale.

**www.PremierHomesLandAZ.com**

Contact Thrac Paulette at [thrac@comcast.net](mailto:thrac@comcast.net) or Kelly Owsley at [Kelly@premierhomeslandaz.com](mailto:Kelly@premierhomeslandaz.com).  
Visit [www.PremierHomesLandAZ.com](http://www.PremierHomesLandAZ.com) for more available Arizona Properties!

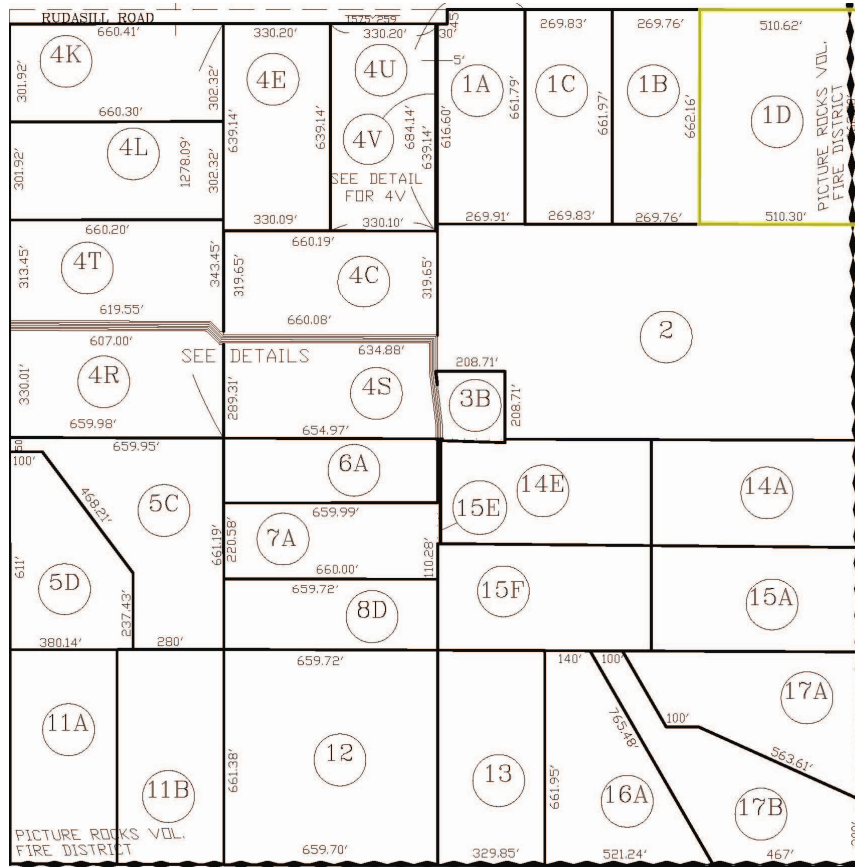
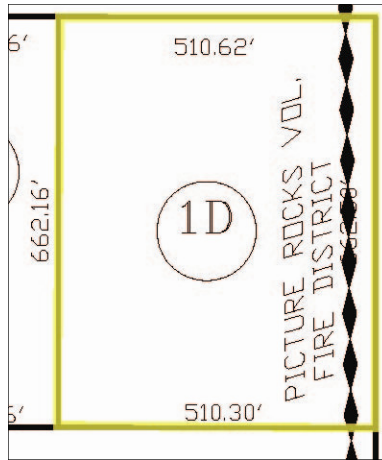


**Premier Homes & Land LLC**  
12112 Rancho Vistoso Blvd., Ste 150-228 Oro Valley, AZ 85755  
Toll Free 1-877-777-9780





W. Rudasill Rd.  
Tucson, AZ 85743  
213-21-001D  
7.76 Acres (Approx.)



**Premier Homes & Land LLC**  
12112 Rancho Vistoso Blvd., Suite 150-228 Oro Valley, AZ 85755  
Toll Free 1-877-777-9770 Office 520-219-4218 Fax 520-219-1624  
[www.PremierHomesLandAZ.com](http://www.PremierHomesLandAZ.com)

