



Offered at \* \$155,000 \*

## Estates at Honey Bee Ridge, Lot 8

- 1 of 3 Bank Owned Lot For Sale in Guard Gated Community!
- Single Family Home Site is approx. 51,338 Square Feet.
- Catalina Mountain and Pusch Ridge Views
- Paved streets
- Sewer, water, electric, phone, gas and cable available
- Convenience of nearby shopping, dining, and more.



Tucson MLS: 21012849



From Tangerine & Rancho Vistoso Blvd:  
 North approximately 3 miles on Rancho Vistoso Blvd.  
 West/Left on Bentwater, through gate  
 North/Right on Silver Cloud to lot on right

- Prices are subject to change without Notice
  - Subject to Prior Sale.
  - Bank Owned Lot - Sold AS IS

# www.PremierHomesLandAZ.com

For Additional Information Contact Ron Owsley at [Ron@Premierbuildersaz.com](mailto:Ron@Premierbuildersaz.com) or Visit [www.PremierHomesLandAZ.com](http://www.PremierHomesLandAZ.com) for more available Arizona Properties!

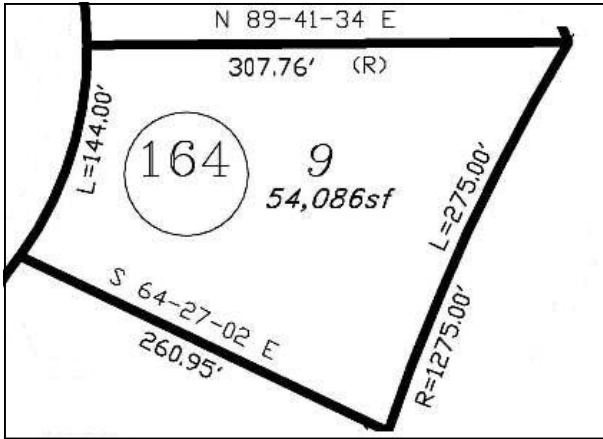
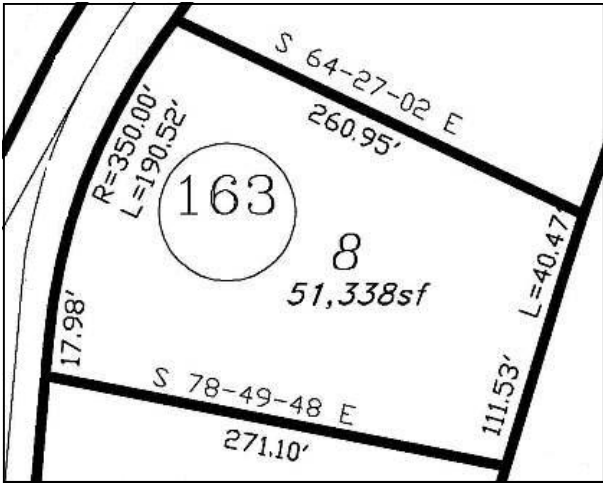


Premier Homes & Land LLC  
 12112 Rancho Vistoso Blvd., Ste 150 Oro Valley, AZ 85755  
 Toll Free 1-877-777-9780



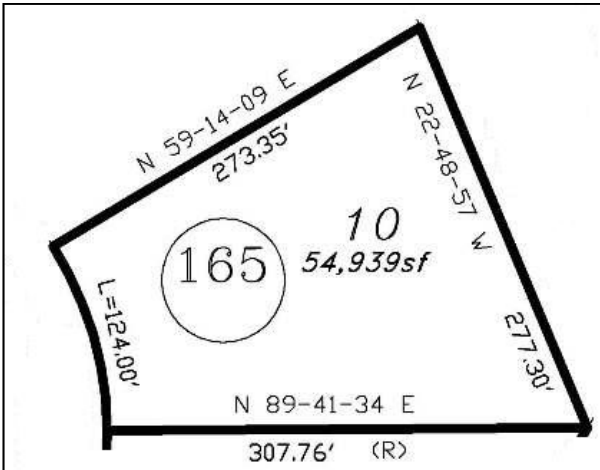


Lot 8 - \$155,000  
14122 N. Silver Cloud Dr.  
Oro Valley, AZ 85755  
219-20-1630  
51,338 Sq. Ft. (Approx.)



Lot 9 - \$135,000  
14146 N. Silver Cloud Dr.  
Oro Valley, AZ 85755  
219-20-1640  
54,086 Sq. Ft. (Approx.)

Lot 10 - \$125,000  
14170 N. Silver Cloud Dr.  
Oro Valley, AZ 85755  
219-20-1650  
54,939 Sq. Ft. (Approx.)



Premier Homes & Land LLC

12112 Rancho Vistoso Blvd., Suite 150 Oro Valley, AZ 85755  
Toll Free 1-877-777-9770 Office 520-219-4218 Fax 520-219-1624

[www.PremierHomesLandAZ.com](http://www.PremierHomesLandAZ.com)

