

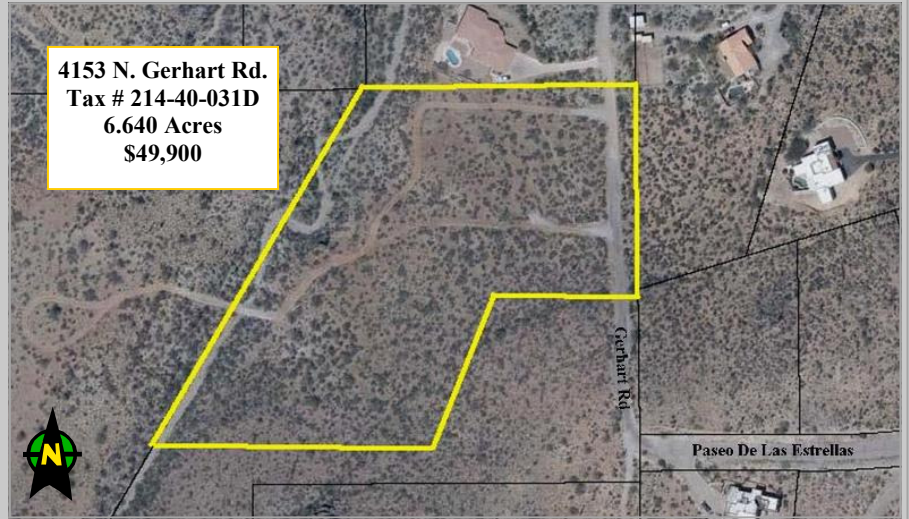


JUST REDUCED!

Offered at \$49,900

4153 N. Gerhart Road Tucson, AZ 85745

- Bank Owned Lot Just Outside Sweetwater Preserve!
- Approximately 6.640 Acres
- Build your new custom home and enjoy the spectacular mountain & city light views.
- Lot may possibly be split into 2 - 3.3 Acre Parcels.
- Paved Access to Property
- Close to I-10, shopping & dining



Tucson MLS: 21008791



From Camino Del Cerro & Silverbell:
 West on Camino Del Cerro
 South on Tortolita Rd
 West on Placita Acantilada
 North on Calle del Risco
 West on Paseo de las Estrellas
 North on Gerhart to Lot sign

- Price is subject to change without Notice
- Subject to Prior Sale.
- Bank Owned Lot- Sold AS IS

www.PremierHomesLandAZ.com

Contact Thrac Paulette at thrac@comcast.net or Kelly Owsley at kelly@premierhomeslandaz.com.
 Visit www.PremierHomesLandAZ.com for more available Arizona Properties!

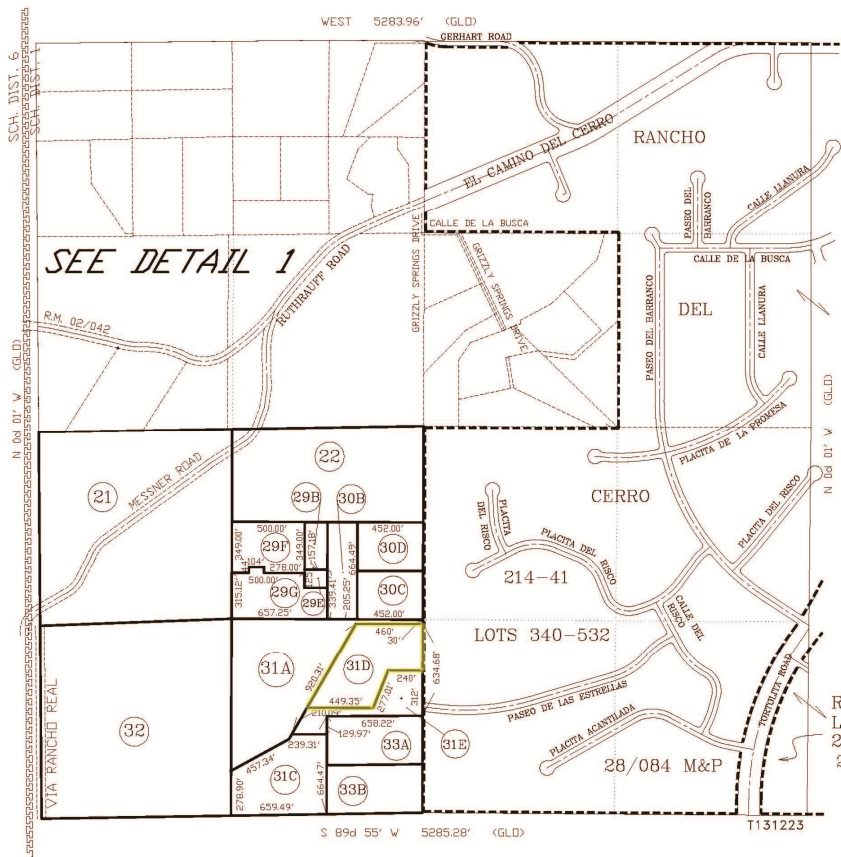
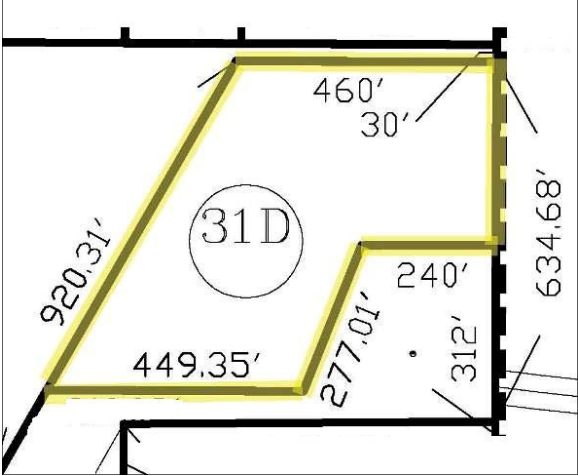


Premier Homes & Land LLC
 12112 Rancho Vistoso Blvd., Ste 150-228 Oro Valley, AZ 85755
 Toll Free 1-877-777-9780





4153 N. Gerhart Rd
 Tucson, AZ 85745
 214-40-031D
 6.640 Acres (Approx.)



Premier Homes & Land LLC
 12112 Rancho Vistoso Blvd., Suite 150-228 Oro Valley, AZ 85755
 Toll Free 1-877-777-9770 Office 520-219-4218 Fax 520-219-1624
www.PremierHomesLandAZ.com

